



California Regional Championship, presented by Yamaha

GENERAL STADIUM INFORMATION

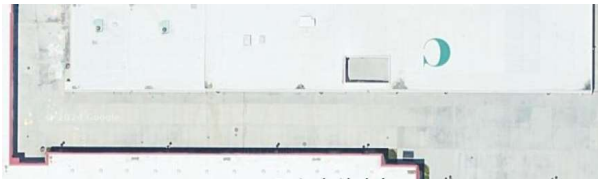
November 2, 2024 – Eagle Stadium – Rancho Cucamonga, CA



WARM-UP AREAS:



- All Band warm-up areas are on grass surfaces.
- The lot will be divided into three equal spaces.



-Pit warm-up will be in between Building C and B



FIELD ENTRY/EXIT GATES:

- Band and Pit will enter from Back Side 1, through a gate that is 12' wide, with no height restrictions.
- Props will enter BACK side 2, through a gate that is 12' wide, with no height restrictions.
- All Band, Pit, and Props will exit BACK side 2 through a gate 12' wide with no height restriction.



FIELD MARKINGS:

- The Performance Field is marked with Traditional High School Field Markings
- High School field markings will be in White paint, 53'4" from the front and back sidelines and 53'4" apart and will be placed every 5 yards.



DIRECTOR VIEWING AREA AND JUDGING AREA:

- The Director Viewing Area will be the 3rd row down from the top of the bleachers and will be marked with signs.
- Judges will be located in or on top of the pressbox