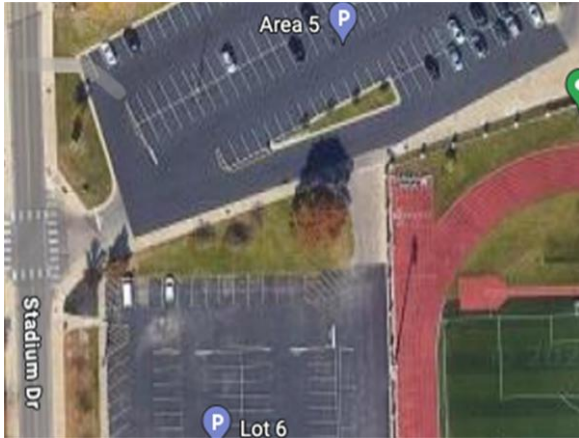




Northwest Ohio Regional Championship, presented by Yamaha
GENERAL STADIUM INFORMATION
Glass Bowl Stadium – Toledo, OH



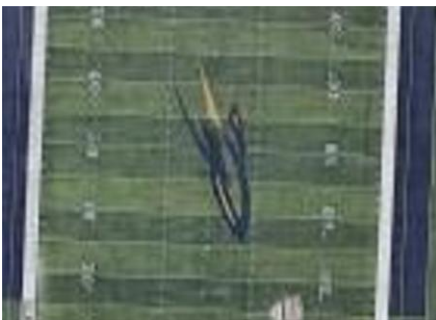
WARM-UP AREAS:

- All warm-up areas are on paved surfaces
- The parking lot will be divided into three equal spaces for winds and battery
- Color guards and pits will have separate warm-up areas



FIELD ENTRY/EXIT GATES:

- Pit and all props will enter AND exit from FRONT side 1 through a gate that is 10'8" wide with no height restrictions
- Bands will enter BACK side 1 through a gate that is 9'8" wide with no height restriction
- Bands will exit Front side 1 through a gate that is 10'8" wide with no height restrictions



FIELD MARKINGS:

- NCAA/Texas High School hash marks will be marked in WHITE paint, 60' from the front and back sidelines and 40' apart
- Traditional High School hash marks will be marked in yellow, 54'4" from the front and back sidelines and 54'4" apart - this will be marked every 5 yards
- It is 40' from the front sideline to the front wall of the stands at the 50-yard line



DIRECTOR VIEWING AREA AND JUDGING AREA:

- The Director Viewing Area is at the top of Section 4, which is accessible from the stairs at the 35-yard line
- Judges will be in the top of the spectator seating area in section 5